



Jefferson High School EXECUTIVE SUMMARY

PROVIDED BY FINDORFF

700 W. Milwaukee Street • Jefferson, WI 09.06.2024

Overview

School has begun at Jefferson High School, and students are now using the recently renovated classroom spaces! Work continues in the Auto Shop, Metal Shop, Wood Shop, and Construction Skills lab which will be ready for students in October! With the substantial completion MEPF (Mechanical, Electrical, Plumbing, Fire Protection) "rough-ins" in the Skills Lab, painting is beginning at the ceilings and walls in the space. Casework and accessories have been installed in the Head House, while MEPF fixtures and devices are finishing up. Alongside this work, SDoJ's Test Kitchen and shop equipment is getting moved into place and being hooked up. Some of the larger equipment showing up recently includes an automotive paint booth, an automotive lift, and a wide belt sander! Stay tuned for more exciting equipment to come!

Progress Update

- Wall and ceiling painting in the Skills Lab Addition
- MEPF fixtures/devices in the Test Kitchen/Head House areas
- Owner equipment terminations in the Test Kitchen and Shop areas

Upcoming Work

- MEPF fixtures/devices in the Shop spaces and Skills Lab Addition
- Sealed concrete flooring in the Skills Lab Addition
- Mechanical unit startup in the Shop areas and Skills Lab Addition
- Owner equipment terminations in the Skills Lab Addition



A look into the Skills Lab Addition where wall and ceiling painting has begun with finished MEPF rough-ins in place.



The new dust collector unit outside of the Skills Lab Addition and Wood Shop is in place and being prepared for startup!

DID YOU KNOW?

An exciting new piece of equipment in the Auto Shop was recently installed – a new auto paint booth! This paint booth measures up at 24'L x 14'W x 11'H and is stationed in the southwest corner of the shop. It can be used to perform a variety of tasks including powder coating, aerospace composite curing, or finish paint drying/curing. Talk about an exciting new learning environment for students!



Questions?

Project Manager, Jonathan Winch / (608) 219-5091 / jwinch@findorff.com

Project Engineer, Brennan Sullivan / (920) 319-2077 / bsullivan@findorff.com

Findorff
BUILDING & BEYOND



East Elementary EXECUTIVE SUMMARY

PROVIDED BY FINDORFF

120 S. Sanborn Ave • Jefferson, WI PAGE 2

On to the Next Phase!

Phase 1 and 2a of construction is now complete, and the community gathered for a "Project Celebration" on Thursday, September 5th to cut the ribbon on this first phase of construction. Over the past 2 weeks, restroom tile finishes, fixtures and accessories were completed, a new sod lawn was installed along Sanborn Ave, staff moved into the building, and students were welcomed for the first day of school! There is plenty of work left to do, and crews are now on to phase 3 of construction!

Progress Update

- Phase 1 (Office and Classrooms) and 2a (Music Room) Complete
- Gym Ceiling complete!
- Phase 3 work underway!
- Construction clean in bathrooms

Upcoming Work

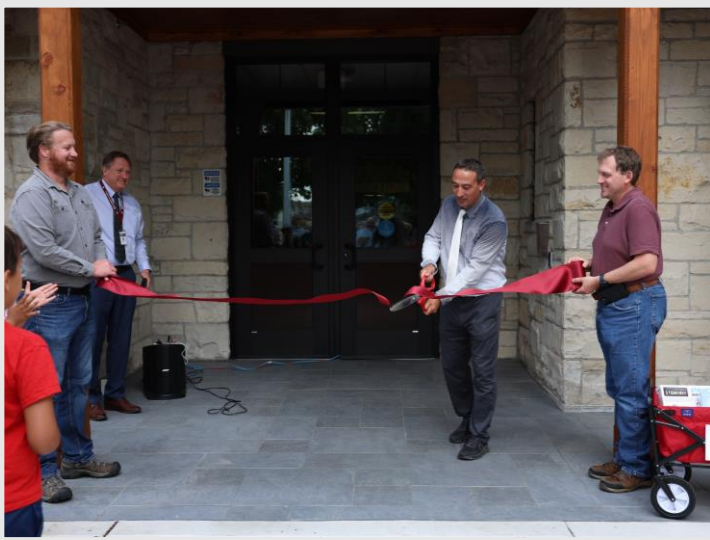
- Phase 3 classroom drywall installation and taping/finishing



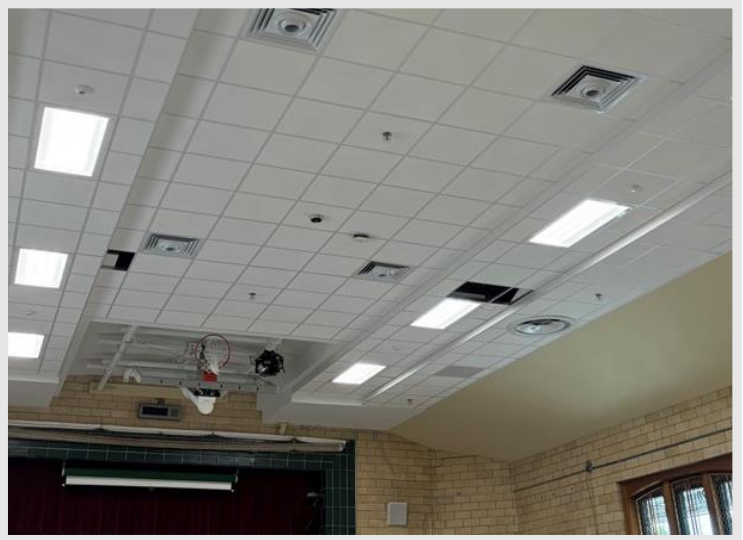
New sod was installed near the new main entrance along Sanborn Avenue!



The newly reconfigured and remodeled office space with secure entrance sequence is now open and welcoming students, staff, parents and visitors!



A community "Project Celebration" event for the first phase of construction was held on Thursday, September 5



The new gym ceiling is now in place!

Questions?

Project Manager, Jonathan Winch / (608) 219-5091 / jwinch@findorff.com

Project Engineer, Maura Cannon / (714) 747-4844 / mcannon@findorff.com

Findorff
BUILDING & BEYOND



West Elementary EXECUTIVE SUMMARY

PROVIDED BY FINDORFF

900 W. Milwaukee Street • Jefferson, WI PAGE 3

Summer 2024 renovation work at West Elementary is complete, and students are back to school enjoying their new learning spaces! A "Project Celebration" event with the community was held on Thursday, 9/5 – check out these photos of the renovated spaces!



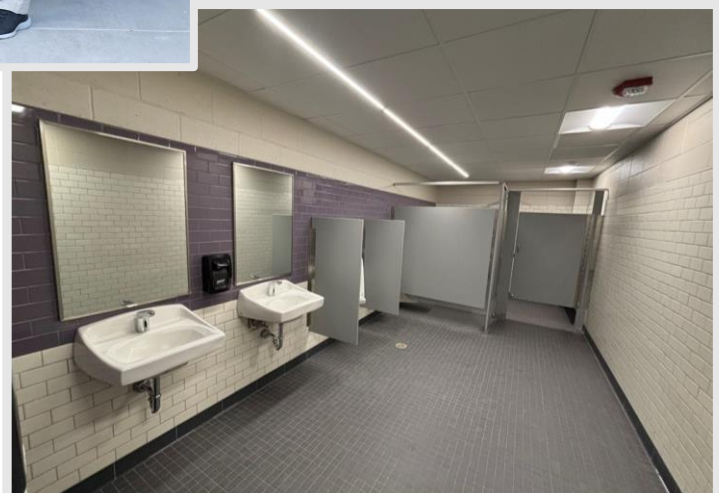
Library Space



South Corridor adjacent to Library



Renovated cafeteria and OT/PT space



Renovated restroom space

Questions?

Project Manager, Jonathan Winch / (608) 219-5091 / jwinch@findorff.com

Project Engineer, Maura Cannon / (714) 747-4844 / mcannon@findorff.com

Findorff
BUILDING & BEYOND



Sullivan Elementary EXECUTIVE SUMMARY

PROVIDED BY FINDORFF

618 Bakertown Rd. • Jefferson, WI PAGE 4

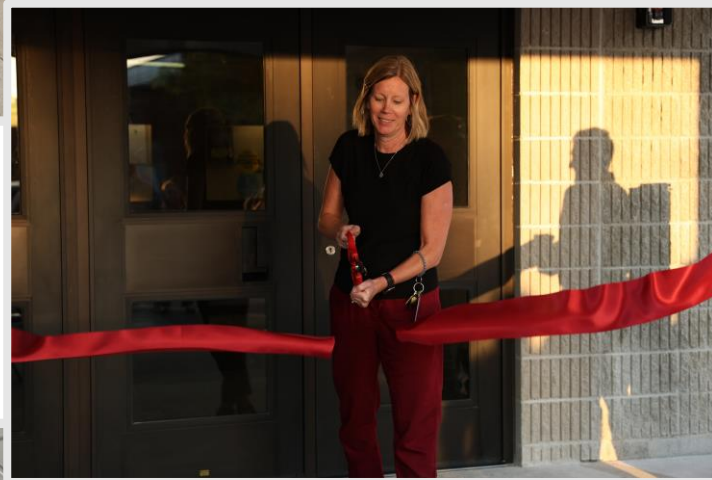
Summer 2024 work at Sullivan Elementary is complete! A "Project Celebration" event with the community was held on Thursday, 9/5 – check out these photos of the renovated spaces!



Exterior elevation with new windows into the office/reception area and re-installed building signage



Renovated restroom space



Renovated vestibule with connection to waiting/office reception for new secure entry sequence



Renovated corridor space outside of main office

Questions?

Project Manager, Jonathan Winch / (608) 219-5091 / jwinch@findorff.com

Findorff
BUILDING & BEYOND